



Scan to see them online.

**(01) 864 4247**  
**SALES@SHEDSDIRECTIRELAND.COM**



**FINGLAS:** UNIT 50, JAMESTOWN BUSINESS PARK, JAMESTOWN ROAD, FINGLAS, D11 DT98  
**NAAS ROAD:** THE OLD BALDONNEL GARDEN CENTRE, NAAS ROAD, DUBLIN 22, D22 PK59



**SUMMER 2026**



# STANDARD STYLE SHED

This is the most popular style of wooden shed. These sheds have the apex to the front, where the door is. We have listed all the most common sizes below, but if you're looking for a size that is not listed here, get in touch and we'll make up a bespoke quote for you.

**APEX: 7'// EAVES: 5'6" // DOOR: 6'2" HIGH AND 2'5" WIDE**



Size (L x W)	Rustic	Deluxe	Rustic PT	Deluxe PT / BB	Steel Roof	Blocks needed
6 X 4	€575	€755	€720	€945	€110	9
6 X 5	€625	€855	€780	€1,070	€130	9
7 X 5	€645	€975	€805	€1,225	€155	9
6 X 6	€645	€975	€805	€1,225	€155	9
8 X 6	€665	€1,040	€840	€1,300	€210	9
6 X 8T	€750	€1,105	€935	€1,355	€210	9
10 X 6	€900	€1,200	€1,130	€1,490	€255	12
8 X 8	€975	€1,335	€1,215	€1,665	€265	12
12 X 6	€1,110	€1,440	€1,380	€1,790	€305	12
10 X 8	€1,130	€1,535	€1,420	€1,940	€330	15
12 X 8	€1,490	€1,895	€1,870	€2,350	€400	20
14 X 8	€1,665	€2,135	€2,110	€2,665	€465	20
16 X 8	€1,850	€2,440	€2,335	€3,045	€530	24
10 X 10	N/A	€1,910	N/A	€2,400	€425	24
12 X 10	N/A	€2,300	N/A	€2,875	€500	24
14 X 10	N/A	€2,665	N/A	€3,340	€585	24
16 X 10	N/A	€3,050	N/A	€3,785	€665	24
18 X 10	N/A	€3,425	N/A	€4,285	€745	35
20 X 10	N/A	€3,820	N/A	€4,740	€840	35

Pictured lining is only supplied with pressure treated Deluxe or Barrel Board sheds

N/A denotes that the board type is not available in this size. In the above instances, Rustic Wood is not suitable for larger sized sheds.

'Blocks needed' refers to how many 3 3/4" solid concrete blocks that you will need to have on site for the wooden assembly team to build your shed upon. The assembly team cannot supply these blocks (They'd just have a van full of blocks!), so it's important that you have these ready on the day. Each block should cost approx €2-€4 from a builder's merchant. You don't need to place these blocks in any specific manner, just have them on site for the assembly team to use as needed.

# ORDERING DETAILS

## ONLY A 12% DEPOSIT

Only pay 12% up front. The rest is due about a week before the day of assembly. This is a **non-refundable** deposit (sheds are built to order). Cancellation will result in a loss of the deposit paid.

## COUNTIES

These wooden sheds are only available in Dublin, Meath, Wicklow, Louth, Kildare, Carlow, Wexford & Kilkenny.

Westmeath is also available, however there is a +€25 cost and a +1 week delivery time.

Laois is also available, however there is a +€40 cost and a +1-2 week delivery time.

## STANDARD FEATURES

All of our wooden sheds come with these features as standard:

- One glass window (Exception, 'Timore' Sheds have two windows as standard)
- One door
- A bolt lock
- 2 external twist-locks on the door (one high, one low)
- Door height of 6'2"
- Door width of 2'5"
- A full wooden floor

## EXTRAS

We can offer a range of extras & add-ons for our wooden sheds. Please note that not all extras are available for every shed. For example, Double Doors with a window on the front alongside it, are only available on sheds with a door-side width of over 8ft.

EXTRA WINDOW	+ €30
THREE SHELVES	+ €35
DOUBLE DOORS	+ €70
STABLE DOORS	+ €40
WINDOW BOXES	+ €20
SKIRTING	+€1.50 PER FOOT
SPANISH LOCK (LOCK & KEY)	+ €85
CUTDOWN SERVICE	+ €55

Please note that extras are only available at the time of order. The addition of any of these items cannot be added-on after the shed has been assembled.

## OLD SHED REMOVAL

We can remove your old wooden shed, when we deliver your new wooden shed. We cannot remove old steel sheds.

6 X 4	€150	12 X 6	€180
6 X 5	€150	10 X 8	€200
7 X 5	€180	12 X 8	€200
6 X 6	€180	14 X 8	€200
6 X 8	€180	16 X 8	€200
8 X 6	€180	10 X 10	€200
8 X 8	€180	12 X 10	€200
10 X 6	€180	14 X 10 +	€220

## TO ORDER

Call: (01) 864 4247

Online: [shedsdirectireland.com](http://shedsdirectireland.com)

In-Store:

Finglas: Unit 50, Jamestown Business Park, Jamestown Road, Finglas, D11 DT98

Naas Road: The Old Baldonnell Garden Centre, Naas Road, Brownsbarn, Dublin, 22, D22 PK 59

CALL (01) 864 4247

# COTTAGE STYLE SHED

Cottage-style wooden sheds have the apex to the side and they are a foot taller than the standard size sheds. They're popular in short, wide gardens, or for people looking for a less traditional-styled shed. The most popular sizes are listed below, but get in touch if you need a different size for your cottage. Cottage sheds are the only wooden sheds measured WxL.

**APEX: 8' // EAVES: 6'6" // DOOR: 6'2" HIGH AND 2'5" WIDE**



Size (W x L)	Rustic	Deluxe	Rustic PT	Deluxe PT / BB	Steel Roof	Blocks needed
6 X 4	€735	€915	€915	€1,135	€110	9
6 X 5	€780	€935	€975	€1,160	€130	9
7 X 5	€805	€1,135	€1,015	€1,430	€155	9
6 X 6	€805	€1,135	€1,015	€1,430	€155	9
8 X 6T	€830	€1,195	€1,035	€1,485	€210	9
6 X 8	€830	€1,195	€1,035	€1,485	€210	9
10 X 6	€1,075	€1,370	€1,345	€1,710	€255	12
8 X 8	€1,135	€1,505	€1,420	€1,865	€265	12
12 X 6	€1,335	€1,650	€1,650	€2,060	€305	12
10 X 8	€1,370	€1,770	€1,720	€2,210	€330	15
12 X 8	€1,720	€2,110	€2,150	€2,640	€400	20
14 X 8	€1,920	€2,365	€2,390	€2,945	€465	20
16 X 8	€2,200	€2,790	€2,740	€3,480	€530	24
10 X 10	N/A	€2,145	N/A	€2,675	€425	24
12 X 10	N/A	€2,530	N/A	€3,160	€500	24
14 X 10	N/A	€2,985	N/A	€3,740	€585	24
16 X 10	N/A	€3,550	N/A	€4,435	€665	24
18 X 10	N/A	€3,760	N/A	€4,705	€745	35
20 X 10	N/A	€4,200	N/A	€5,245	€840	35

Pictured lining is only supplied with pressure treated Deluxe or Barrel Board sheds

N/A denotes that the board type is not available in this size. In the above instances, Rustic Wood is not suitable for larger sized sheds.

'Blocks needed' refers to how many 3 3/4" solid concrete blocks that you will need to have on site for the wooden assembly team to build your shed upon. The assembly team cannot supply these blocks (They'd just have a van full of blocks!), so it's important that you have these ready on the day. Each block should cost approx €2-€4 from a builder's merchant. You don't need to place these blocks in any specific manner, just have them on site for the assembly team to use as needed.

# TALLER STYLE SHED

The Taller Style shed is a bit of a mix of the Standard and the Cottage sheds. It's got the apex to the front like a Standard, but it has an 8ft apex, like a Cottage. They're great if you have awkwardly sized things to store, or if you need a bit more headroom in your shed. They're the most popular choice for workshops, home gyms and for placing pool tables in!

**APEX: 8' // EAVES: 6'6" // DOOR: 6'2" HIGH AND 2'5" WIDE**



Size (L x W)	Rustic	Deluxe	Rustic PT	Deluxe PT / BB	Steel Roof	Blocks needed
6 X 4	€735	€915	€915	€1,135	€110	9
6 X 5	€780	€935	€975	€1,160	€130	9
7 X 5	€805	€1,135	€1,015	€1,430	€155	9
6 X 6	€805	€1,135	€1,015	€1,430	€155	9
8 X 6T	€830	€1,195	€1,035	€1,485	€210	9
6 X 8	€830	€1,195	€1,035	€1,485	€210	9
10 X 6	€1,075	€1,370	€1,345	€1,710	€255	12
8 X 8	€1,135	€1,505	€1,420	€1,865	€265	12
12 X 6	€1,335	€1,650	€1,650	€2,060	€305	12
10 X 8	€1,370	€1,770	€1,720	€2,210	€330	15
12 X 8	€1,720	€2,110	€2,150	€2,640	€400	20
14 X 8	€1,920	€2,365	€2,390	€2,945	€465	20
16 X 8	€2,200	€2,790	€2,740	€3,480	€530	24
10 X 10	N/A	€2,145	N/A	€2,675	€425	24
12 X 10	N/A	€2,530	N/A	€3,160	€500	24
14 X 10	N/A	€2,985	N/A	€3,740	€585	24
16 X 10	N/A	€3,550	N/A	€4,435	€665	24
18 X 10	N/A	€3,760	N/A	€4,705	€745	35
20 X 10	N/A	€4,200	N/A	€5,245	€840	35

Pictured lining is only supplied with pressure treated Deluxe or Barrel Board sheds

N/A denotes that the board type is not available in this size. In the above instances, Rustic Wood is not suitable for larger sized sheds.

'Blocks needed' refers to how many 3 3/4" solid concrete blocks that you will need to have on site for the wooden assembly team to build your shed upon. The assembly team cannot supply these blocks (They'd just have a van full of blocks!), so it's important that you have these ready on the day. Each block should cost approx €2-€4 from a builder's merchant. You don't need to place these blocks in any specific manner, just have them on site for the assembly team to use as needed.

CALL (01) 864 4247

# WOODEN CABIN SHED

Cabin sheds are beautiful and unique choices. They have a slanted, pent roof and they are ideal for smaller gardens or where light may be restricted. You can choose to have the roof slope from front-to-back or from side-to-side. If you want a shed with some personality, look no further than the Cabin Shed!

**HIGH POINT: 7' // LOW POINT: 6'2" // DOOR: 6'0" HIGH AND 2'5" WIDE**



Size (L x W)	Rustic	Deluxe	Rustic PT	Deluxe PT / BB	Steel Roof	Blocks needed
6 X 4	€660	€820	€830	€1,015	€110	9
6 X 5	€715	€845	€890	€1,065	€130	9
7 X 5	€775	€1,000	€970	€1,250	€155	9
6 X 6	€775	€1,000	€970	€1,250	€155	9
8 X 6	€785	€1,160	€985	€1,455	€210	9
10 X 6	€1,000	€1,350	€1,255	€1,690	€255	12
12 X 6	€1,195	€1,535	€1,485	€1,910	€305	12

# WOODEN LODGE SHED

Lodge sheds are similar to the Standard style sheds, though they offer a 2ft veranda on the front. This veranda is included in the measurements below. They offer some shade and shelter without being overbearing in size, at the front.

**APEX: 7' // LOW POINT: 5'6" // DOOR: 6'2" HIGH AND 2'5" WIDE**

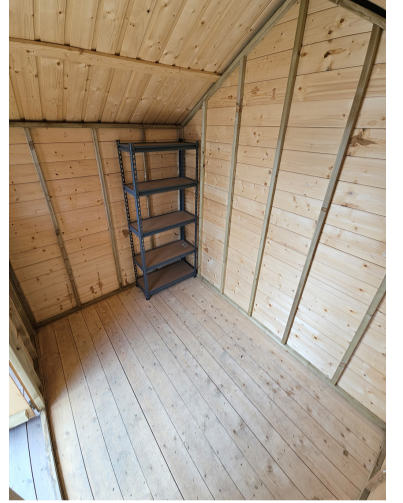


Size (L x W)	Rustic	Deluxe	Rustic PT	Deluxe PT / BB	Steel Roof	Blocks needed
6 X 6	€740	€925	€915	€1,140	€155	9
8 X 6	€835	€1,080	€1,045	€1,340	€210	9
10 X 6	€940	€1,245	€1,165	€1,540	€255	12
8 X 8	€1,030	€1,370	€1,280	€1,700	€270	12
12 X 6	€1,140	€1,490	€1,410	€1,850	€305	12
10 X 8	€1,280	€1,650	€1,595	€2,035	€330	15
12 X 8	€1,590	€1,945	€1,925	€2,415	€400	20
14 X 8	€1,735	€2,190	€2,090	€2,655	€465	20

# WOODEN CHALET SHED

These sheds have a 4ft veranda included in their listed size as standard. e.g. The 10ft (L) x 8ft (W) option has an internal 'shed' of 6ft (L) x 8ft (W) and a 4ft veranda (L) At it's front, The Wooden Chalet shed offers a beautiful place to watch the garden grow from. In the back, there is a functional shed. They're a gorgeous addition to any garden.

**APEX: 7'// LOW POINT: 5'6" // DOOR: 6'2" HIGH AND 2'5" WIDE (SPLIT DOOR)**



Size (L x W)	Rustic	Deluxe	Rustic PT	Deluxe PT / BB	Steel Roof	Blocks needed
10 X 8	€1,390	€1,735	€1,725	€2,090	€330	15
12 X 8	€1,665	€2,095	€2,070	€2,610	€400	20
10 X 10	N/A	€2,110	N/A	€2,640	€425	24
12 X 10	N/A	€2,480	N/A	€3,090	€500	24
16 X 8	€2,150	€2,610	€2,675	€3,355	€530	24
20 X 8	€2,535	€3,215	€3,155	€3,930	€665	35

# GEORGIAN STYLE SHED

The Georgian style wooden shed is a vertically cladded wooden shed with a window on the door. It comes with a tiled roof and a side-window as standard, too. This shed is the only shed in the wooden range with vertically cladded TG&V wood! It's similar to Deluxe Pressure Treated wood, but vertically aligned.

T



Size (L x W)	Cladded TG&V	Blocks needed
6 X 4	€1,380	9
6 X 6	€1,765	9
8 X 6	€1,910	9
10 X 6	€2,225	12
10 X 8	€2,800	15

CALL (01) 864 4247

# WOODEN BIKE SHED

Keep your halls clean and your bike stored in this super handy Bike Store! Available with Pressure Treated Rustic or Pressure Treated Deluxe Wood. This means that you won't have to treat it for years to come. The bike store is large enough for at least 2-adult sized bikes. Please note: This has a step-up into it. If you need a bike store with a flat entrance, check out our steel options.

**WIDTH: 7' // DEPTH: 4' // HEIGHT: 6'**



SIZE

4' X 7'

RUSTIC (PT)

€710

DELUXE (PT)

€960

# WOODEN POTTING SHED

The Wooden Potting shed is the gardener's new favourite place away from home. It's 6ft wide and 8ft deep. It has large windows on the longer side to ensure that your plants get all the light that they need. It's large enough to grow numerous plants in, and you can pop a comfy chair or two in there, too. It's the ideal place to while away those spring and summer afternoons.



6' X 8' RUSTIC PRESSURE TREATED WOOD

€1,040

# CORNER SHED

The Corner Shed is a specialist shed, it's one design to fit into a right-angled corner. It's pressure treated as standard too, so you won't need to treat it for at least a decade.

**WIDTH: 6'10" // DEPTH: 6'10" // HEIGHT: 7'2"**



SIZE

6'10" X 6'10"

DELUXE (PT)

€1,765

# CHILDRENS PLAYHOUSE

There are three playhouses available. All come with smooth, pressure treated wood as standard. This means no splinters and no maintenance. They're all sturdy, wipe-clean wood and they come with an internal lining to keep the temperature relatively consistent.



<b>BB PLAYHOUSE</b>	<b>8 X 6</b>	<b>€1,585</b>	<b>10' HIGHEST POINT</b>
<b>TREEHOUSE</b>	<b>5 X 5 (8.5 X 7 INCL. STEPS)</b>	<b>€1,520</b>	<b>6' HIGH (4' OFF GROUND)</b>
<b>CASTLE</b>	<b>5 X 5</b>	<b>€1,520</b>	<b>8'5" HIGH, WITH 21 STEPS</b>

ADD A SLIDE TO THE TREEHOUSE FOR ONLY €150 EXTRA

# WOODEN BIN STORE

Our Wooden Bin Store is built to last. It's made with pressure-treated Scandinavian pine, galvanised hinges (and latches) and it has an opening roof. Each segment opens separately for easy lifting.

**WIDTH: 6'10" // DEPTH: 6'10" // HEIGHT: 7'2**

## 2 Bay Bin Store

1480mm Wide  
800mm Deep  
1.3m High (Highest point)  
1.2m High (Lowest point)  
Bin Partition: 650mm x 730mm

## 2.5 Bay Bin Store

2250mm Wide  
830mm Deep  
1.3m High (Highest point)  
1.2m High (Lowest point)

## 3 Bay Bin Store

2400mm Wide  
830mm Deep  
1.3m High (Highest point)  
1.2m High (Lowest point)

<b>2 BIN STORE</b>	<b>€480</b>
<b>2.5 BIN STORE</b>	<b>€600</b>
<b>3 BIN STORE</b>	<b>€600</b>



# LOG STORE



This wooden shed is not dissimilar to the Cottage Style shed, but with a partitioned area to the side that is ideal for drying logs or turf. Available in Barrel Board or Pressure Treated wood only - but this means that you won't have to worry about treating it for at least a decade!

<b>DELUXE PRESSURE TREATED</b>	<b>€1,725</b>
<b>BARREL BOARD</b>	<b>€1,725</b>

**TOTAL: WIDTH: 10' // DEPTH: 6' // HEIGHT: 7'**  
**SHED: WIDTH: 7.5' // DEPTH: 6' // HEIGHT: 7'**  
**LOG STORE: WIDTH: 2.5' // DEPTH: 6' // HEIGHT: 7'**  
**DOOR TO SHED: 6'1" (H) // 2'8" (W)**

CALL (01) 864 4247

# SUMMERHOUSE

This Summerhouse is made with Pressure treated vertical tongue-and-groove (TG&V) wood. It has a double door opening, with real glass-paned panels across the four Georgian-style doors. It has a built in grey-moisture barrier lining to combat damp and condensation as well as a box-profile steel roof and black hinges. It has a 30cm (approx 1ft) overhang and it looks absolutely stunning.



10' X 8'

SUMMERHOUSE

€2,800

# WOODEN KIOSK

The Wooden Kiosk Shed is a specialist shed, that is unlikely to be seen in any back garden. This is designed for markets, like Christmas Markets or as a built-in kiosk for on-site sales. It features a large opening hatch that works as a shelf and it can be screwed together instead of nailed, to make disassembly easier, should you need to regularly assemble for markets and then take it with you!



10' X 8'

WOODEN KIOSK

€2,520

# ADDITIONAL DETAILS

You will require a relatively level ground for your wooden shed to be built onto. You will also need to have the appropriate amount of 3" or 4" solid concrete blocks on site for the assembly team to build your shed upon. You can see how many are required beside each size on the products in this brochure. If you have any questions about this, please call 01 864 4247.

Lead-times on sheds can vary depending on season, but you will be advised of your lead time at order. During the off-season, sheds can be built in 1-3 weeks, and during the high season, it can take up to 12 weeks.

Rustic Sheds are very basic sheds. In exposed areas where heavy rain may blow against the shed, rain will soak through the timber causing the shed and it's contents to get damp. We do not recommend that you place electronics or anything else that could be damaged by damp in a Rustic Shed.

During the sales process, it will be necessary to pass your details on to third party bodies to complete the manufacture of your shed. Sheds Direct Ireland are agent for a wooden shed manufacturer based in Ireland and as such, your address and shed requirement details will be passed onto them to fulfill. If you have any questions about wood types or any extras, call us at 01 864 4247 for more info.

[WWW.SHEDSDIRECTIRELAND.COM](http://WWW.SHEDSDIRECTIRELAND.COM)

# WOOD TYPES

Here is a breakdown of all the wood types available from Sheds Direct Ireland.

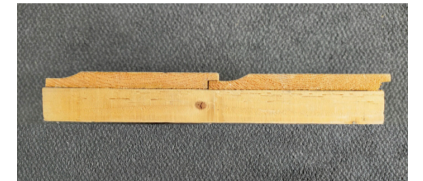
## RUSTIC

Rustic wood is the most basic and thinnest wood that we offer. It is 10mm thick, rough overlapping sheeting. These sheds are not air-tight and they can (and likely will) become damp in wet weather. We would not recommend that you store anything that can be damaged by damp in Rustic Sheds. These sheds need to be treated every 12 months to keep them in good condition.



## DELUXE

Deluxe Wood is over twice as thick as Rustic Wood. It is 22mm thick and the panels lock in together. It is a tongue-and-groove planed timber, meaning that the panels slot into each other. Deluxe wood is the most common choice for Wooden Sheds in Ireland. It will need to be treated every 12-24 months to keep them in good condition.



## BARREL BOARD (DENOTED AS BB)

These are 22mm thick, log-effect boards. They are popular because of their unique look. Barrel Board is similar to Deluxe wood, except that these boards are bulged. Barrel Board is Pressure Treated as standard (more on this below) and it comes with a breathable membrane lining as standard.



## TG&V

TG&V (or Tongue and Groove with a V-shaped joint) is only available with the Georgian-style shed. It is a vertically cladded shed design that is similar to Deluxe Pressure Treated wood. It's 22mm thick and it's pressure treated, which means that it comes with an internal lining also.



## PRESSURE TREATMENT (DENOTED AS PT)

Pressure Treatment isn't a wood style, but rather an option that you can add to your wood style. It's the addition of preservatives that is pumped into the wood (it's not just a top layer coating). The treating prevents the ill effects of water, fungus or insects such as termites. Pressure Treated wood does not require as much maintenance as non-treated wood.

There is a slight colour difference between treated and non-treated wood. This will occur over time, though the time-frame in which this can occur varies from shed to shed. The colouring on treated sheds becomes slightly 'silvery'.

Pressure Treated sheds come with an internal membrane lining also (the only exception is Pressure Treated Rustic Sheds). This helps maintain a relative internal temperature, which will also combat condensation formation. This lining may be white or grey. Some of our old photos online depicts a blue lining also. Pressure Treated Rustic sheds do not come with an internal membrane lining because they are thin, porous sheds; as such the lining will get damp, become ineffective (and counter-productive) and break down very shortly after it getting wet.

## OTHER NOTES

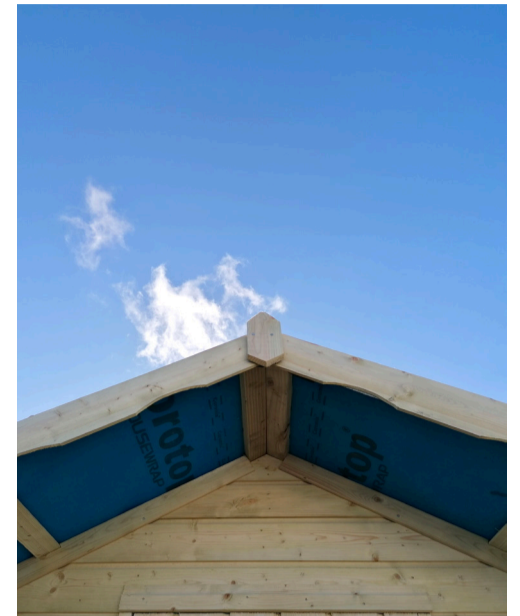
- Unless otherwise stated, all of our wooden sheds are measured length x width
- All wooden sheds require a level base. Uneven bases may result in the blocks being visible.
- All our wooden sheds are nailed not stapled
- Only a 12% deposit is required at time of order. The balance must be paid before assembly.
- Wooden sheds are made to order, as such any cancellation of a shed will result in the forfeit of your deposit.
- We only use FSC certified wood
- All of our wooden sheds are made in Ireland
- All of our wooden sheds are made to order
- A one-year workman's guarantee is offered on all wooden sheds
- Wooden Sheds are only available in Dublin, Meath, Wicklow, Louth, Kildare, Carlow, Kilkenny, Westmeath & Laois.

CALL (01) 864 4247

# OVERHANG SHED

The Overhang wooden shed is a Standard Style Wooden Shed with an 18" / 1.6ft / 46cm overhang on the front apex. It offers shelter from the rain and the sun and it can provide emergency shelter for your cat or dog, should the elements suddenly change. It looks great too!

**APEX: 7' // EAVES: 5'6" // DOOR: 6'2" HIGH AND 2'5" WIDE // OVERHANG 1.6'**



Size (L x W)	Rustic	Deluxe	Rustic PT	Deluxe PT / BB	Steel Roof	Blocks needed
6 X 8T	€795	€1,150	€980	€1,400	€210	9
10 X 6	€945	€1,245	€1,175	€1,535	€255	12
8 X 8	€1,020	€1,390	€1,260	€1,710	€265	12
12 X 6	€1,155	€1,495	€1,425	€1,835	€305	12
10 X 8	€1,175	€1,580	€1,465	€1,985	€330	15
12 X 8	€1,535	€1,940	€1,915	€2,395	€400	20
14 X 8	€1,710	€2,180	€2,155	€2,710	€465	20
16 X 8	€1,895	€2,495	€2,380	€3,090	€530	24
10 X 10	N/A	€1,955	N/A	€2,445	€425	24
12 X 10	N/A	€2,345	N/A	€2,920	€500	24
14 X 10	N/A	€2,710	N/A	€3,385	€585	24
16 X 10	N/A	€3,095	N/A	€3,830	€665	24
18 X 10	N/A	€3,470	N/A	€4,330	€745	35
20 X 10	N/A	€3,865	N/A	€4,785	€840	35

## WE'RE BLEEDIN' SHEDLY!

We have over 500 five-star reviews across Google Maps and Trustpilot! Not only that, we are also:

- An award-winning Guaranteed Irish company
- The only shed company that is All Ireland Business All Stars accredited SEVEN years in-a-row
- More 5-star reviews on Google than any other Irish shed company!
- Oh, and we sell great sheds at great prices, too!

**CALL (01) 864 4247**  
**SHEDSDIRECTIRELAND.COM**