

www.  
**Sheds Direct**  
Ireland.com

**(01) 864 4247**

**SALES@SHEDSDIRECTIRELAND.COM**



**4 Years**  
In A Row **2019 - 2022**

**SHEDS DIRECT IRELAND**



**UNIT 50, JAMESTOWN BUSINESS PARK, FINGLAS, D11 DT98**



**SPRING / SUMMER EDITION 2023**

# Fan Assisted Heater

## The Inverter - €389



The Inverter 5086 / 5096 heater is one of, if not the best paraffin heater on the Irish Market. It is an incredible piece of Japanese Engineering and it is packed with safety features. It's cost effective and simple to use.

- **Powerful (3,200W)**
- **ECO Mode to save fuel and maintain temperature**
- **Heating capacity in m<sup>3</sup>: Up to 120m<sup>3</sup>**
- **Consumption : 0.083 - 0.3 liters per hour**
- **Tank size : 5L**

## Tozane Fuel - €48

*Per 20L drum*

- **High flashpoint**
- **Virtually odourless**
- **Less than 3 part sulphure per million**
- **Safe for indoor use!**



First and foremost, Kerosene is not safe for inhalation. Generally, kerosene machines are designed to be used outdoors where there is considerably better ventilation; this in itself reduces the amount that a person can inhale. Using kerosene indoors is not good for your health and wellbeing.

Kerosene contains seventeen times more Sulphur than Paraffin Fuels like our Tozane. Sulphur can cause irritation of the eyes, throat and nose. In large doses, it can cause short-term breathing difficulties, dizziness and even vomiting. Constant inhalation indoors can lead to long-term breathing issues.

Kerosene will clog your machine. This is a fact. It may be instant, it may take some time, but inevitably, using Kerosene in a paraffin heater will result in a broken unit. You wouldn't put diesel into a petrol car, don't put kerosene into a paraffin heater. Paraffin is a distilled version of kerosene. Paraffin has had the vast majority of impurities removed from it. When the impurities in Kerosene burn, they create soot or clumps or by-products that can build up and prevent any other fuels getting through the machine. These blockages are usually nigh-on impossible to remove, so once the damage is done, it's done.

**Your warranty will be void if you use kerosene in any paraffin heater.**

**\*The industrial heater is the only heater that we sell that runs on kerosene / diesel.  
Otherwise: DO NOT USE KEROSENE IN A PARAFFIN HEATER**

# Wick Heaters - No Electricity Needed!



## Glow Wick 240 - €230

Heat up any space around the house, office or shop with this our incredible Glow Wick 240. Just light the Wick and it's ready to go, It's perfect for keeping the heating bills down during an Irish winter (or "summer").

- Max power: 2.4KW
- Heating capacity up to 15m3
- Tank size: 3.4L
- Gives up to 14.5hrs of constant heat per full tank
- Runs without any electricity.
- Batteries only needed for automatic lighting - You can just light the Wick manually instead.

You cannot use kerosene in these heaters. Only C1 Grade Paraffin Oil.

## Glow Wick 290 - €260

You could melt a (small) ice berg with our Glow Wick 290. With a whopping heat output of 2.9KW this paraffin heater will no doubt keep the house warm and your wallets happy.

- Max power: 2.9KW
- Heating capacity up to 18m3
- Tank size: 4.4L
- Gives up to 15.7hrs of constant heat per full tank
- Runs without any electricity
- Batteries only needed for automatic lighting - You can just light the Wick manually instead.

You cannot use kerosene in these heaters. Only C1 Grade Paraffin Oil.



## Camping Stove - €130

Perfect for camping, fishing trips, back garden BBQs or festivals.

- Portable liquid fuel heater 2600W output
- 4.6L Tank
- CE Approved so it meets safety standards
- Easy carry handle
- Easy to fill
- Fuel gauge display, so you can keep it topped up
- Replacement wicks available from €25

Add a Camping Kettle - €15

## The Rocket Industrial Heater

Was €449 // NOW €360

### Heating for large, open spaces!

The Industrial Heater is a big, powerful unit, designed to heat up warehouses, barns, garages and other large buildings. It's the only heater that we offer that can run on kerosene or diesel (just don't mix them!). It's the affordable way to heat big, big areas.



### Specifications

Power: 30KW / 102,000 BTU/hr

Fuel Consumption: 2.15Kg/h

Air Output: 720m<sup>3</sup>/h

Fuel Tank: 45L

Power Input: 220-240V 50Hz

87.5cm x 39.5cm x 46.5cm

Net Weight: 20kgs

Gross Weight: 23kgs

### NOT FOR HOME USE!

This heater is not suitable for home uage. It is designed to be used in large, airy, well-ventilated areas.

## The Ronan Heating *(infrared heater with bluetooth speaker)*

€349



### Audio beats with a treat of heat

The Ronan Heating is an infrared heater with a built in stereo speaker. It's ideal for heating up gaming rooms, gazeebos and garden bars. It does require cover, so you can't mount it to to uncovered walls, but otherwise this beautiful piece of kit will keep you warm and rockin' at a fraction of the cost of other heaters.

### Specifications

Power: 1800W / Coverage: 20m<sup>2</sup> /

Voltage: 30V / Frequency: 50/60Hz

Dimensions: 137cm (W) x 18cm (H) x 6.7cm (D)

Net Weight: 8.3kg / Gross Weight: 10.2kg



### How infrared heating works

Infrared heaters convert electricity into radiant heat, however unlike other heaters - they use 100% of the heat they produce. Infrared heaters don't heat the air around them, so all the heat they generate is delivered directly to the object they're pointed at; they're just like the sun! Radiant heat has a higher rate of heat transfer per kw than convection heaters, so these act as very economically sound heaters.

## Air Cooler

€99



This Air Cooler from Sheds Direct Ireland will cool you down fast. If you need to get cooler than cool, you don't need anything else. This unit has more features than a Picasso portrait and it can even be used to create ambience in the room.



# Heating Accessories

## Paraffin Oil Pumps / Siphon *Manual pump €5 / Battery pump €20*

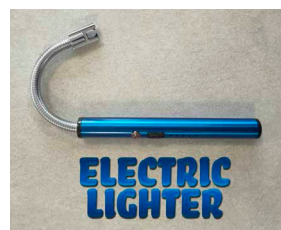
Transfer liquids fast and easily with these pumps. They siphon out oil and feature an easy to use quick-release valve.

## Replacement Wicks *from €25*

Has your wick reached the end of its life? We have replacement wicks for all of our wick heaters & camping stove.

## Plasma Rechargeable Lighter *Available in Blue or Red €15*

Electric lighters, also known as plasma lighters or arc lighters, are the lighter of the future! You don't need to worry about the dangers of matches or lighter fluid in the home, your lighter blowing out in high winds or giving yourself claw-hand as you try and light those awkward to reach wicks! Just press the button and ignite. Did we mention it is fully rechargeable? just plug in your USB and away it goes.



## Camping Kettle (use with Camping Stove) *€15*



The Camping Kettle will allow you to make a perfect cup of tea while you're out hillwalking. If the chill starts to pull at you while you're out fishing, a drop of hot coffee could be the perfect way to raise the inner temperature. At a festival? Sure you could pay €3 for a cup of hot water for your home-brought tea-bags or pot noodle! You could simply boil one with your camping stove and kettle. Cut out the middle man.

## Mesh Dome (use with Camping Stove) *€20*

The mesh dome is a replacement for any old or burnt out domes for our Camping Stove. It's ideal if you have an older camping stove, but want to keep all the most easily burnt out parts fresh.

**CALL 01 864 4247**

# Handtrucks

If you need something to help with cleaning up the stockroom, or if you're doing some light courier work, a handy handytruck will save you lots of grief. We have 4 options available to cater to any need. All max weight capacities are listed below.

## **P-Handle Box Trolley**

**€53**

- Max Capacity: 150kg
- Footplate: 35cm x 22cm
- Truck Measurements: 40cm (L) x 54cm (W) x 130cm (H)
- Perfect for warehouses, businesses, homes and more!



## **Aluminium Hand Truck**

**€75**

- Max Capacity: 150kg
- Footplate: 40cm x 21cm
- Truck Measurements: 44cm (L) x 49.5cm (W) x 118cm (H)
- Made with Aluminium - it's exceptionally lightweight
- Pneumatic Wheels



## **Aluminium Hand Truck (with folding footplate)**

**€110**

- Max Capacity: 200kg
- Footplate: 35cm x 22cm
- Truck Measurements: 49cm (L) X 30cm (W) x 127cm (H)
- Glide runners for easy manoueverability on stairs
- Suitable for horizontal loading
- Non Puncture Wheels



## **Industrial Yellow Hand Truck**

**€110**

- Max Capacity: 300kg
- Fixed Footplate: 50cm x 23cm
- Extended Footplate: 27cm x 50cm
- Truck Measurements: 49cm (L) X 30cm (W) x 127cm (H)
- Non Puncture Wheels



# Transforming Handtrucks

Transforming handtrucks convert into different positions allowing you to be ready for any loading situation. If you're a courier, warehouse worker or if you do a lot of moving of materials daily, a transforming handtruck can be a godsend. Don't leave it until it's too late. Be ready for that next awkward move ahead of time with a transforming handtruck.

## 3 in 1 Hand Truck

€199

The 3 in 1 Hand Truck from Sheds Direct Ireland is as tasty as it sounds! It's a hand truck that converts into a tilted trolley that converts into a flatbed. It has a solid wheel too. Whatever you need from your handtruck, this one has it.

It weighs only 20kg, but it supports up to 350kg as a flat-bed.

- Size as a handtruck: 138cm (L) x 52cm (W) x 98cm (H)
- Size as a 45° Truck: 154cm (L) x 52cm (W) x 97cm (H)
- Size as Flatbed: 465cm (L) x 52cm (W) x 132.5cm (H)
- Extendable Nose Plate: 46cm (W) x 19cm (L)
- Add a solid back-plate for €30!



## 2 in 1 Hand Truck

€175



The 2 in 1 is a simplified version of the 3-in-1. It's smaller, making it handier in tight spaces. It's quick release lock allows it to safely and speedily transform from a handtruck into a flat-bed! Solid wheels.

It weighs only 18kg and supports up to 300kg as a flat-bed.

- Size as Platform: 110cm (L) x 30cm (W) x 100cm (H) (Platform base is 30cm off the ground)
- As Standard Truck: 27cm (L) x 30cm (W) x 130cm (H)
- Nose Plate: 27.3cm x 45.7cm
- Add a solid back-plate for €30!

## Collapsible Hand Truck

€75

The 2 in 1 is a simplified version of the 3-in-1. It's smaller, making it handier in tight spaces. It's quick release lock allows it to safely and speedily transform from a handtruck into a flat-bed!

It weighs only 11.6kg and supports up to 140kg

- Height when fully extended: 120cm
- Height when compacted: 79cm
- Height with back removed: 58cm
- Total Width: 49cm
- Back bar width: 27cm
- Total Depth: 48.5cm
- Folding plate: 30cm x 25cm
- Tyres: 26cm

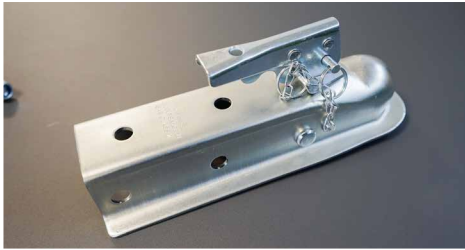


CALL 01 864 4247

# Vehicle Accessories

## Trailer Attachment

€30



If you're looking to move a trailer easily, attach a large cart to your ride on mower or transport a mobile home, this is the product you need. Made from Solid Metal, it's strong and rugged. It has a quick release handle. It will stay locked and in place unless this is operated, so you can rest easy that your cart or mobile home is in safe hands.

## Trailer Dolly

€55



This Trailer Dolly has a 260kg capacity (approx 600lbs) and it can be used with many types of trailers fitted with 1 50mm ball hitch. Other details include:

- Black powder-coated finish
- It comes with all mounting hardware, including a trailer ball.
- 123cm x 69cm x 25cm

## Motorbike Stand

€58

Perfect for keeping your bike upright or secured in a garage!

- Ports for bolting to surfaces.
- Tie-ports for securing with tie-down straps
- Built for securing front wheels
- Length: 60cm - Width 45cm
- Wheel Suitability - 11cm -16cm



## Bike Stand

€39.99



The Bike Stand is a tall, sturdy, simple to use tool to store your bike. Perfect for use in homes, sheds or garages!

- Made with Powder-coated steel
- Suitable for front or back bicycle wheels
- Compactable – they can be taken apart and folded flat
- Lightweight – they only weight 1.5kg

## Bicycle Rack

€15

The perfectly simple way to store your bike.

- Boltable
- Connectable
- Can be mounted vertically (Bike will not be held in place alone while mounted vertically, it will require a lock, etc.)



# Loading Ramps

## Solid Loading Ramps

€200 / €99

**3,000kg / 200kg**



Our solid ramp sets feature extruded holes that provide unprecedented grip, even in wet or muddy conditions for safe and secure loading. They are constructed from high-quality galvanised steel, which makes them highly stable and durable. These ramps will hold up for years to come and won't rust.

3,000kg & 1,500kg Spec:  
200cm (L) x 21.5cm (W) x 5.5cm (D)

200kg Spec:  
160cm (L) x 22cm (W) x 5cm (D)

## Folding Loading Ramps

€125



Our folding ramps are perfectly portable and they support up to 500kg.

Folding Ramps Dimensions (Open):

177cm (L) x 23cm (W) x 5cm (H)

Loading height max: 177cm

Load capacity: max. 250kg per ramp or a total of 500kg per set.

Folding Ramps Dimensions (Folded):

88.5cm (L) x 23cm (W) x 10cm (H)

## Wheelchair Ramps

€129 / €150 / €180

**Small / Medium / Large**



Lipped, foldable wheelchair ramps.

All support up to 270kg / 42 stone / 600lbs in weight.

Weight is based on an evenly distributed load on 2 axles.  
(135kg / 21 Stone / 300lbs on a single axle)

Three sizes available.

- Small: 61cm x 72cm (Weights: 5.2kg)
- Medium: 122cm x 72cm (Weights: 10.05kg)
- Large: 183cm x 72cm (Weights: 14.7kg)



**CALL 01 864 4247**

# Carts

## 350L Tip Cart

€170

- 350L Tub Capacity
- Connects to Quads and ATVs (with Clevis Pin Hitch)
- Presents like a shovel
- Easy grip full handle
- Easily tipped by lever on the draw bar
- Steel Rimmed Wheels (Not Plastic)
- Strong steel frame and chassis
- Overall size - 150cm (L) x 95cm (W) x 74cm (H)
- Tub Size - 120cm (L) x 95cm (W) X 31cm (D)

**PNEUMATIC  
STEEL RIM  
WHEELS**

**ATTACHES TO  
QUADS, ATVs  
& MOWERS**

**BALL HITCH  
EXTENSION  
AVAILABLE**

**ALSO  
AVAILABLE  
IN BLACK**

**FOLDAWAY  
CLEVIS PIN  
HITCH**



## 150L Mesh Cart with Fold-down Sides

€110

The new Mesh Cart from Sheds Direct Ireland is a winner through-and-through. It's perfect for back-gardens, building sites, office or warehouses.

- Removable Panels
- Works as a box-cart or as a flatbed
- Pneumatic Tyres
- Pivoting front axel
- Moveable pulling handle
- Length: 96cm / 38"
- Width: 51cm / 20"
- Height to handle: 102cm / 40"
- Height to top of cage: 50cm / 19.5"
- Height to flatbed base: 30cm / 12"



# Carts

## 250L Tip Cart, with 4 Wheels

€220



- Heavy Duty, 250L Tub Capacity
- Supports up to 250KG
- 2-IN-1 handle allows cart to be towed behind a ride-on lawnmower.
- Convenient tipping mechanism & versatile, padded pulling handle.
- Galvanised steel frame
- Pivoting front axle
- Ball hitch extension available
- Steel rimmed wheels with all-terrain tyres.
- Overall size - 125cm (L) x 82cm (W) x 71cm (H)
- Tub Size - 125cm (L) x 82cm (W) X 31cm (D)



## 75L Tip Cart

€85



This 75L tip cart is the perfect turf cart, small garden cart or festival companion. It holds 75L and tips easily when you pull the release bar below.

- 4 Wheel Tip Cart
- Pivoting Front Axle (Front Wheel Drive)
- Easy lifting system for easy tipping
- Steel Frame
- Versatile Pulling Handle
- Ideal for a variety of gardening tasks
- Heavy Gauge plastic tray
- 94cm (L) x 50cm (W) x 51cm (H)
- Ball hitch extension available



CALL 01 864 4247

# Wheelbarrows

## Equestrian Wheelbarrow (with twin wheels)

€155



- 160L Litre capacity
- Heavy gauge corrosion-free tray
- Galvanised Frame & fittings
- Twin Wheel
- Own Front Stand for easier storage
- Ideal for any equestrian facility / Barnyard
- Supplied flat packed – minimal assembly required

## Plastic Wheelbarrow

€70 / €80

A great lightweight wheelbarrow.

- Single, pumpable wheel
- Square bar to facilitate easy storage
- Heavy-duty plastic tub

90 Litres / 90KG / 14.2 Stone - Yellow  
Tub Size: 89cm (L) x 67cm (W) x 65cm (H)

100 Litres / 100KG / 15.7 Stone - Green  
Tub: 91cm (L) x 68cm (W) x 62cm (H)



## Steel Wheelbarrow

€80



Perfect for sharp, heavy or awkward loads.

- Powder-coated steel tub
- Galvanised frame
- Square tipping bar to facilitate tipping / easy storage
- Ideal for rubble or sharp materials

90 Litres / 90KG / 14.2 Stone  
Tub Size: 89cm (L) x 59cm (W) x 60cm (H)

# Garden Accessories

## Metal Compost Bin

€299



This metal compost bin is a premium innovative design and is perfect for all your composting needs. This environmentally friendly method of composting is a great for those looking to avoid plastic options and want a longer lasting alternative than a wooden bin.

- Holds up to 830L of compost
- 1.5mm Aluminium frame
- Sliding compost release door
- Easy to assemble
- Maintenance-free
- Gas Hinges

- Length 103cm
- Width 100cm
- Height 84cm

## Raised Garden Bed

€59.99



In Ireland, Raised Garden Beds are easy to come by, but finding one that's high quality without costing you a fortune isn't as easy. We also included an optional base!

- Length 80cm
- Width 45cm
- Height 31cm
- Garden Bed Size:

- Length 75cm
- Width 40cm
- Height 30cm

This Raised Garden Bed can hold up to 110L

## Dog Pen

€115



This dog pen is fully customisable, lightweight and sturdy enough to hold even the wildest of puppies!

There are 8 panels and they are 75cm (W) x 85cm (H). The door panel has a step up to the door which is 19cm. The door is 33cm wide and it's secured closed by 2 bolt latches. These panels fold flat and are easily transported.

The Dog pen is suitable for use indoors or outdoors.

# Garden Furniture

## 5-piece Rattan Sofa set with canopy

Was €950 // NOW €550

This 5-piece rattan garden sofa set with canopy transforms any garden into an instant relaxation space. This dining set is fully customisable, so you can make an L-shaped sofa, two love-chairs side-by-side or spread the pieces apart and have them all facing the glass table in the centre. It's virtually maintenance-free so you can relax at it without worrying about upkeep on those long, lazy Summer days.



### Pieces & Dimensions

There are 5 pieces in this set. They are

(x1) Three-Piece Sofa. (206cm x 73cm x 650cm)

(x1) Canopy

(x2) Armless Seats (60cm x 73cm 65cm)

v(x1) Stool (60cm x 60cm x 32cm)

(x1) Glass-Topped Table (41cm x 41 x 46cm)

(x1) Water-proof covering



**Includes Raincover**



## Picnic Table

€99



This fold-down picnic table is perfect for family get-togethers, festivals or impromptu sessions! It folds down to nothing and can be carried with ease wherever you're going.

The aluminium seats are lightweight and sturdy. They support 100kg each and the MDF table holds 30kg too. If you're out and about and want a break, these are ideal to pull out from the boot.



# Balcony Essentials

## Space Saving Balcony Table & Chairs

€299

This beautiful table and chairs set folds together, meaning that it's small on space, but big on convenience. Turn your balcony or patio into a dining area and then piece it together to maximise your space. Set includes 1 table, 2 chairs, 2 teal cushions and 1 raincover.

This is the ideal addition to any small space.



## Fold Down Balcony Table

Small €60 / Large €75



Two sizes available!

- Small: 80cm wide x 40cm deep (Black Top)
- Large: 120cm wide x 40cm deep (White Top)

Balcony tables that fold down aren't easy to come-by in Ireland. These handy little guys will allow you to turn any balcony or railing into a work station, a place to dine at or even just a home for your plants.

As the name would suggest, they fold-down so you can reclaim the space when they're not in use. They've a back-protector too, so you don't have to worry about items rolling off the back!

CALL 01 864 4247

# Garden Equipment

## Tool Bag and Garden Seat

Was €25 // NOW €20



The Garden Tool back and seat is perfect for anyone with green fingers. The portable seat give you a place to relax after sewing your new plants!

- One Foldable Chair
- One Carry Bag which includes:
- Two Trowels (One with measurement guidelines)
- One Miniature Rake
- One Fork
- Two pruning shears (one curved, one straight)
- One roll of wire
- One Spray Can
- One set of gardening Gloves (one size fits all)



## Garden Tool Box

Was €17 // NOW €12.75



The Garden Tool Box makes a great gift for anyone in your life who's garden-obsessed. It's got all the essentials for keeping small gardens in top-nick - and now for only €12.75, it's a steal!

One Tool Box with a handle which includes:

- Two Trowels (One Narrow, One Wide)
- One Weed Remover
- One hand Shears
- One Miniature Rake
- One Hand Fork
- One Spray Bottle
- One Pruners
- Two long Miniature Trowels

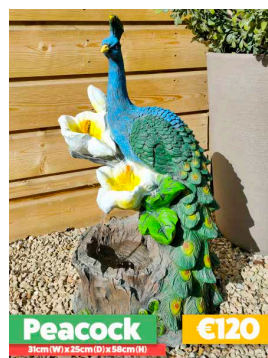
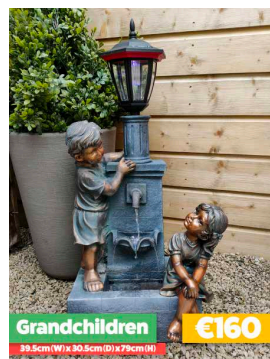
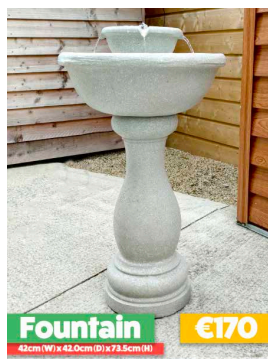


# Water Features

## Water Features

From €85

All of our Water Features are 100% Solar Powered. They come with the required solar panel and connections leads to charge them up. They all contain LED lights, which will glow a blar white in the evening. No plumbing or wiring required!



CALL 01 864 4247

# Fire Pits

Fire Pits are the perfect way to make the most of your garden. We've three sizes - and all the necessary accessories - now available!

## The Charlie Hotty

€199



The Charlie Hotty sure does blow a lot of hot air! It has a large chimney to redirect the smoke up and away from you and your guest's faces. It has a mesh covering around it, allowing maximum air to get in, without anything inside falling out.

Unit Dimensions: 51cm (W) x 63.5cm (D) x 114cm (H)

The box that it comes in is 55cm x 68cm x 60cm

## The Inferno

€170



The Inferno Fire pit is hexagonal in shape, i.e. it has 6 sides. It's 66cm (W) x 66cm (D) x 62cm (H). It has a thin base that opens into a larger body. The base of the unit is surrounded by a hatched covering. On top a mesh guard prevents accidents and allows for safe and easy loading of materials.

Unit Dimensions: 66cm (W) x 66cm (D) x 62.3cm (H)

It comes in a box that is 28cm (W) x 69cm (D) x 69cm (H).

## The Zodiac

€150



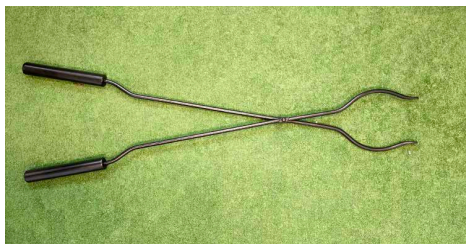
This dome-shaped pit has stars and other planetary designs built into its casing cover. It casts beautifully interesting shadows while giving you a bit of protection too.

Unit Dimensions: 65cm (W) x 65cm (D) x 65cm (H)

The box that it comes in is 36cm x 69cm x 69cm

## Fire Tong

€19



Don't forget the tongs! These handy pieces will allow you to move hot pieces inside your Firepit!

## Fire Mats

€39 / €45



**Small:** 60cm in diameter  
Suitable for the Inferno Fire Pit.

**Large:** 90cm in diameter  
Suitable for the Charlie Hotty and the Zodiac Fire Pits.

# LED Garden Pots

## The Ball

Was €89 // NOW €20



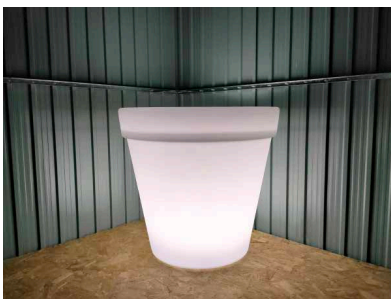
12RGB+12W LEDS  
DC4V 4.8W  
Battery 3.7V 2200ma  
Charger AC110-220V/  
DC4.2V 0.5A

The Illuminated LED Planter lights up your garden. Literally.

These plant pots are filled with LED lights so they can glow in any RGB colour as well as white. They're charged via the included plug cable, they last for hours at a time and they can be the perfect accompaniment to any mood you're looking to achieve in your garden, wedding venue or sensory room.

## The Almore

Was €250 // NOW €50



82cm x 82cm x 76cm  
24RGB+12W LEDS  
DC4V 7.2W  
Battery 3.7V 4400ma  
Charger AC110-220V/  
DC4.2V 1A

## The Cube

Was €120 // NOW €40



40cm x 40cm x 40cm  
12RGB+12W LEDS  
DC4V 4.8W  
Battery 3.7V 2200ma  
Charger AC110-220V/  
DC4.2V 0.5A

## The Elfin

Was €30 // NOW €10



12cm x 12cm x 10cm  
3RGB+3W LEDS  
DC4V 1.2W  
Battery 3.7V 600ma

## The Petal

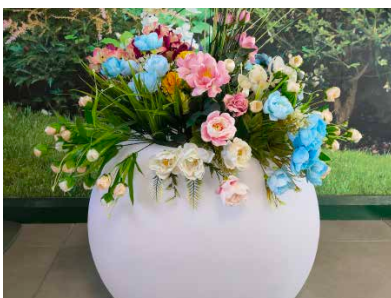
Was €50 // NOW €15



35cm x 34cm x 28  
6RGB+6W LEDS  
DC4V 2.4W  
Battery 3.7V 1200ma  
Charger AC110-220V/  
DC4.2V 0.5A

## The Eden

Was €129 // NOW €40



56cm x 56cm x 43cm  
18RGB+12W LEDS  
DC4V 6W  
Battery 3.7V 3600ma  
Charger AC110-220V/  
DC4.2V 0.5A

## The Elysian

Was €180 // NOW €40



40cm x 40cm x 102cm  
24RGB+12W LEDS  
DC4V 7.2W  
Battery 3.7V 4400ma  
Charger AC110-220V/  
DC4.2V 1A

CALL 01 864 4247

# Solar Lights

These LED lights are 100% solar powered. They require no wiring - just place them somewhere that they can receive sunlight during the day and at night they'll light up! Stainless Steel Tubing. They've three modes: **Mode A** turns on automatically when it's dark, **Mode B** is at half-light when dark and then it raises to a higher power when it detects movement (for 25 seconds) and **Mode C** is entirely dark until the motion sensor is triggered.

## Small Silver

Was €55 // NOW €32



LED Lights: 60 x 2835 SMD LED  
Solar Panel: 2W  
Battery: Li-ion 18650 / 3.7V / 2200mAh  
**Mode A:** 60LM  
**Mode B:** 60LM. Then 240LM when motion sensor triggered  
**Mode C:** 600LM when motion sensor triggered (25 seconds)  
Charge time: 6-8 hours  
Detection Range: ~8m  
Detection Angle: 110°  
CE Approved / IP44 Rating / EMC  
Can be bolted to hard surface or staked into grass

## Medium Silver

Was €59 // NOW €35



LED Lights: 60 x 2835 SMD LED  
Solar Panel: 0.88W  
Battery: Li-ion 18650 / 3.7V / 2200mAh  
**Mode A:** 20LM  
**Mode B:** 20LM. Then 85LM when motion sensor triggered  
**Mode C:** 220LM when motion sensor triggered (25 seconds)  
Charge time: 7-8 hours  
Detection Range: ~8m  
Detection Angle: 110°  
CE Approved / IP44 Rating / EMC  
Can only be staked into grass (cannot be bolted to hard surface)

## Large Silver

Was €75 // NOW €45



LED Lights: 60 x 2835 SMD LED  
Solar Panel: 2W  
Battery: Li-ion 18650 / 3.7V / 2200mAh  
**Mode A:** 60LM  
**Mode B:** 60LM. Then 240LM when motion sensor triggered  
**Mode C:** 600LM when motion sensor triggered (25 seconds)  
Charge time: 6-8 hours  
Detection Range: ~10m  
Detection Angle: 110°  
CE Approved / IP44 Rating / EMC  
Can be bolted to hard surface or staked into grass

# Solar Lamps

Solar Lamps are very similar to the Solar Lights, but they're lamp-shaped with a black metal casing.

## Black Downlight

Was €59 // NOW €35



LED Lights: 12 x 2835 SMD LED

Solar Panel: 2.1W

Battery: Li-ion 18650 / 3.7V / 2200mAh

**Mode A:** 60LM

**Mode B:** 60LM - 240LM when motion sensor triggered (25 seconds)

**Mode C:** 600LM when motion sensor triggered (25 seconds)

Charge time: 6-8 hours

Detection Range: ~10m

Detection Angle: 100°

CE Approved / IP54 Rating / EMC

## Black Circular

Was €65 // NOW €39



LED Lights: 12 x 2835 SMD LED

Solar Panel: 2W

Battery: Li-ion 18650 / 3.7V / 2200mAh

**Mode A:** 60LM

**Mode B:** 60LM - 240LM when motion sensor triggered (25 seconds)

**Mode C:** 600LM when motion sensor triggered (25 seconds)

Charge time: 6-8 hours

Detection Range: ~8m

Detection Angle: 100°

CE Approved / IP54 Rating / EMC

## Black Square!

Was €50 // NOW €30



LED Lights: 20 x 2835 SMD LED

Solar Panel: 1.2W

Battery: Li-ion 18650 / 3.7V / 1800mAh

**Mode A:** 30LM

**Mode B:** 30LM - 120LM when motion sensor triggered (25 seconds)

**Mode C:** 300LM when motion sensor triggered (25 seconds)

Charge time: 6-8 hours

Detection Range: ~8m

Detection Angle: 100°

CE Approved / IP54 Rating / EMC

CALL 01 864 4247

# Candle Holders

These stainless steel, lantern-style candle holders are the perfect place for your favourite candle. They'll allow the candles' scenes to radiate throughout the room, while offering some protection.

## Small

Was €40 // NOW €20



### Small:

17cm (Wide) x 16cm (Deep) x 40cm (Tall).  
It is 35cm tall without the topping

These candle holders are made with stainless steel; they are not cheap chrome. This means that scorch marks are less likely to occur (and much easier to remove should they ever happen). The panels are single-pane glass

## Medium

Was €55 // NOW €27.50



### Medium:

22cm (Wide) x 21cm (Deep) x 45cm (Tall).  
It is 40cm tall without the topping

## Large

Was €70 // NOW €35



### Large:

22cm (Wide) x 21cm (Deep) x 65cm (Tall).  
It is 60cm tall without the topping

# Shelving

## Heavy Duty Shelving Units

Small €60 / Medium €80 / Large €99

Heavy Duty Sheds are ideal for cleaning up any shed, pantry or warehouse!

- Supplied Flat-packed
- Boltless (can be assembled by hand)
- Made with tough powder-coated steel
- Solid MDF Shelves.
- There are 4 shelves and the height of these is adjustable.
- Weight capacity: 450KG.

Three sizes available:

### Small

70cm (W) x 40cm (D) x 150cm (H)  
27.5" (W) x 15.7" (D) x 59" (H)

### Medium

90cm (W) X 40cm (D) X 150cm (H)  
35.4" (W) X 15.7" (D) X 59" (H)

### Large

120cm (W) X 60cm (D) X 150cm (H)  
47.2" (W) X 23.6" (D) X 59" (H)



## Screw in Metal Shelves

€30



Mountable wall shelves for your shed!

These steel shelves come boxed up for minimal self-assembly. They're 4 tiered and they can attach to almost any surface.

Dimensions:

25cm(W) x 33cm(D) x 75cm (H)

CALL 01 864 4247

# DIY Essentials

## Saw Horse (set of 2)

€150

The Sheds Direct Ireland Saw Horse is perfect for any DIY situation. They have adjustable leg heights, strong grip topped surfaces, an easy carry handle, they're made with strong metals and they're free standing.

- Two in a set
- Folds down for easy storage
- Made with metal, not plastic
- Perfect for big jobs
- Glass-filled nylon polymer grip on top
- Safety locks



## Panel Carriers

€24.99

Make moving panels easier with this rubber gripped panel carrier.

If you need to move a sheet up to 22mm (3/4") thick and do it easily, you need a panel carrier. They'll prevent you from hunching or stretching and putting your back in danger.

## Workbench

€125

Turn that garden shed into a workshop with our whopper work bench! It's got three tiers, the shelf heights can be adjusted, there's a peg-board backing, the steel is powder coated and it's perfect for any DIY enthusiast.

### Dimensions

Metal frame: 120cm (W) x 60cm (D) x 150cm (H)

Bottom and Middle Shelf: 60cm (D) x 5cm (H)

Top Shelf: 30cm (D) x 5cm (H)



# Other Accessories

## Motion Sensor LED lights

€29.99



This USB light is perfect for illuminating sheds, cupboards and other places that need a light source but that you won't want to wire up.

- 300 lumens of light
- Motion censored
- USB rechargeable
- They're also magnetic or can be applied anywhere with included 3M tape / screwed into position
- Aluminium Alloy Body.
- Sensor Cone angle 120°
- Sensor Distance 1-3m

## Pop Up Stool

Was €19.99 // NOW €10



The Pop up stool from Sheds Direct Ireland is the perfect portable posterior prop! It's small, it folds down to about 2 inches and it had an almost negligible weight! It's ideal for festivals, gardening, hiking trips and more. Now only €10 and it's available to be shipped anywhere in Ireland!

Colours available:

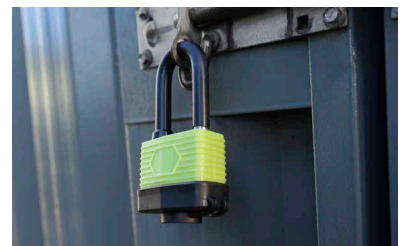
- Red
- Blue
- Mint Green

## Padlock

€10

Keep your equipment locked up with this robust, handy padlock. It's built to fit all our Sheds and Garages, so grab one today!

If you are buying a shed online – you can add a padlock before checkout and avoid paying any delivery fees!



## Heavy Duty Tool Hooks (set of 4)

€10



These simple to install, easy to use tool hooks are the perfect addition to any DIY-ers shed. They'll hold up anything from small squeegees to large snow shovels.

They can be screwed into almost any of our sheds. They'll keep your floors clear, your tools out of harms way and give your storage space a bit of well needed organisation.

CALL 01 864 4247

# Why choose us?

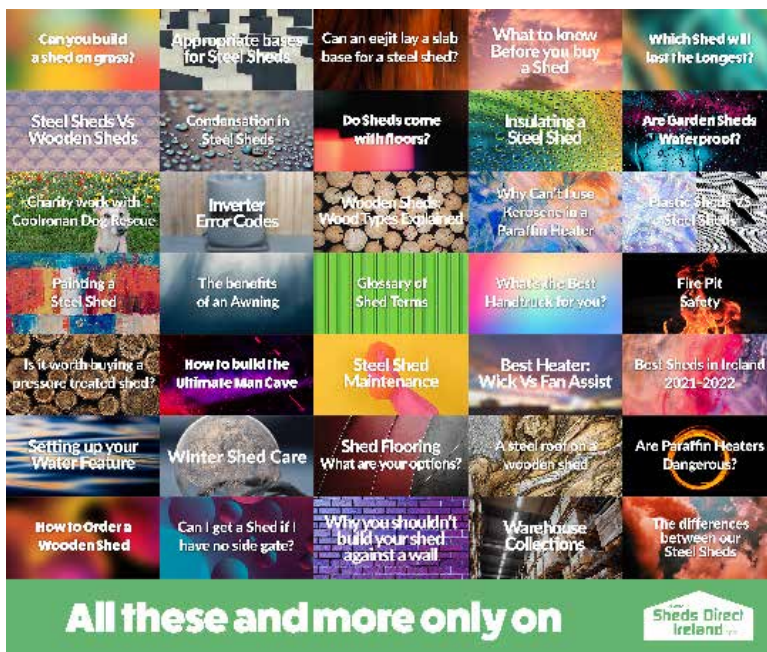


**We're award winners!**



Sheds Direct Ireland are Ireland's highest rated shed company. Here are some of our achievements to date:

- Highest - and most rated shed company on Google Maps. Over 250+ reviews and a 4.5+ star rating
- The only company in our field that is All-Ireland Business All-Stars accredited
- We received accreditation in 2019, 2020 & 2021. We also received .com of the year for 2021 & 2022 and All-Ireland Business All-Stars Super Team for 2022!
- BestinIreland.com's 'Best All 'Round Sheds', 2021, 2022
- Rated 'Great' on Trustpilot (4+ stars)
- Presitge Award Winner 2021/2022.



**We're here to help!**

Our sales team are available to help you with any questions you might have - but if you're looking for answers out our hours, our website has an FAQ section and a blog stuffed with more information than an Encyclopedia.

If you can't find an answer to your question, get in touch with us - and we'll make a point of answering it on the blog for future customers like yourself!

# Visit our Showroom



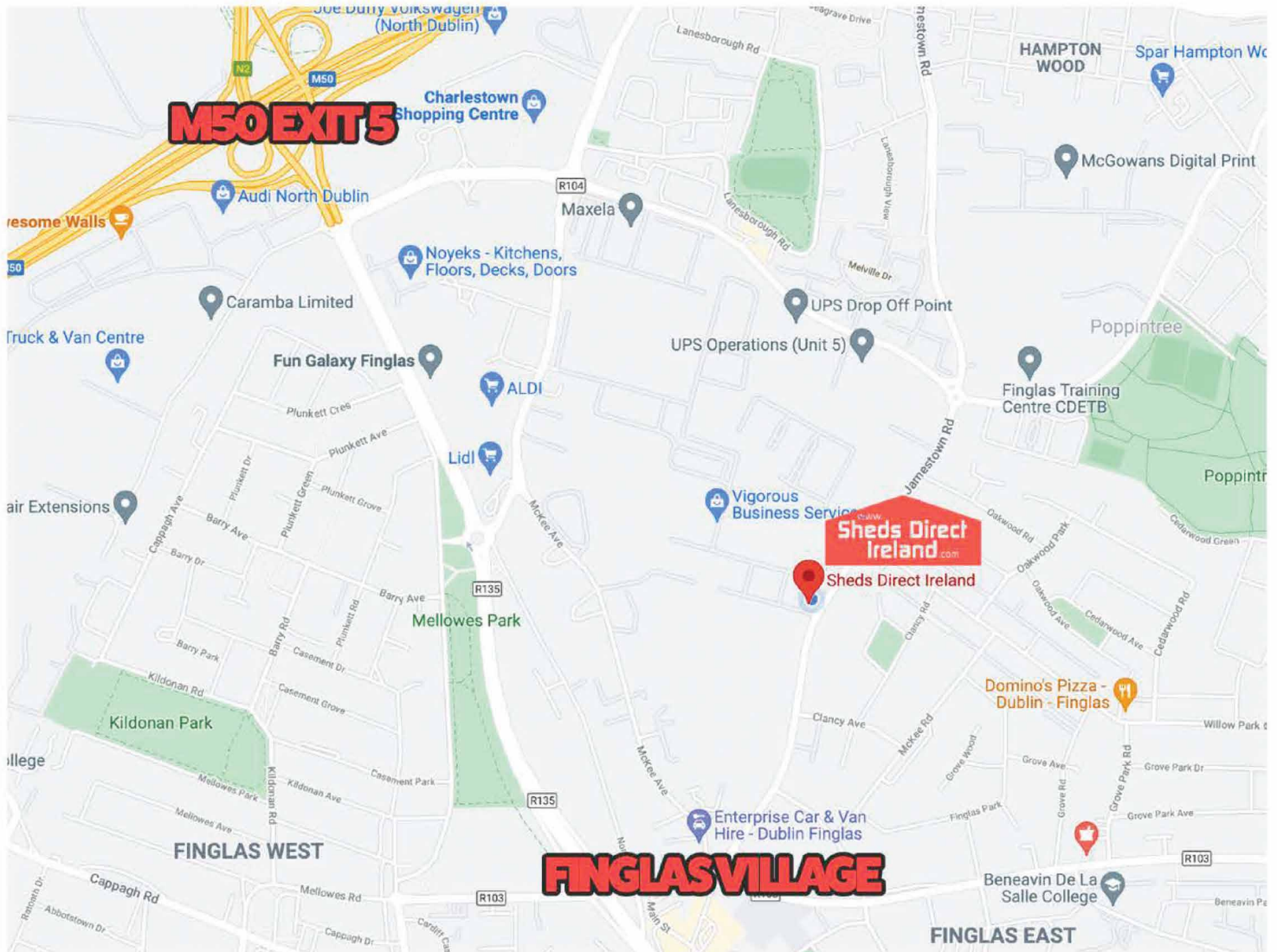
Visit us in our Finglas Showroom to see any of our products for yourself.

## Opening Hours:

- \* Mon-Thursday 9am-5pm (closed 1-2 for lunch)
- \* Friday: 9am-4pm
- \* Saturday: 10am-4pm
- \* Sunday: Closed

## Flat-packed steel shed collection times:

- \* Wednesday, Friday & Saturday: 10.30am-2.30pm



If you're coming up from Finglas Village, drive up the Jamestown Road. You'll pass the Johnston Mooney & O'Brien factory on the left. About 200m further on from this, you'll see the entrance to the Jamestown Business Park entrance on the left also. The Sheds Direct Ireland showroom will be visible - it is the first business on the right as you enter.

# Door Canopies



**Medium** Grey

**€75**

120cm x 80cm / 47.2" x 31.4" (W x D)

**Medium** Clear

**€75**

120cm x 80cm / 47.2" x 31.4" (W x D)

**Large**

**€85**

150cm x 80cm / 59" x 31.4" (W x D)

**XL**

**€90**

200cm x 100cm / 78.7" x 39.3" (W x D)

**XXL**

**€120**

300cm x 100cm / 118.11" x 39.3" (W x D)

# Awnings



**Small**

**€549**

2.5m x 2m / 8' 2" x 6' 6" (Width x Projection)

**Medium**

**€799**

3.5m x 2.5m / 11' 5" x 8' 2" (Width x Projection)

**Large**

**€950**

4m x 3.5m / 13' 1" x 11' 5" (Width x Projection)

If you're looking for awnings for sale in Ireland, you're in the right place. Should you need cover for your commercial property, ours are ideal. They're 100% waterproof, they offer 100% UV protection and they're retractable too. The height and angle of projection are fully customisable, so you can really make it your own. If you have an outdoor dining area, a smoking area or just want to offer your customers shelter from the erratic Irish weather, they're a no-brainer.

Only available in grey material.

They're perfect for cafes, restaurants, patios and even back gardens!