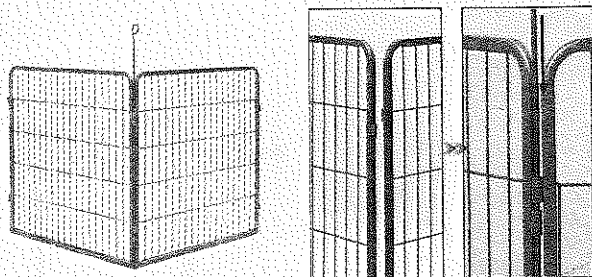


Translation of The Original Instruction Manual

Installation

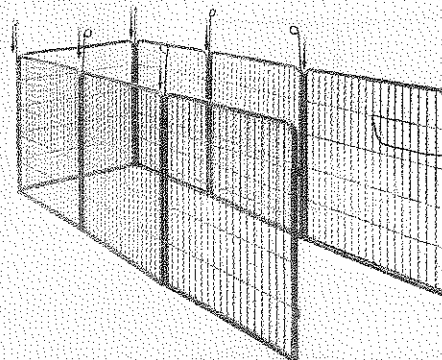
RETAIN FOR FUTURE REFERENCE

①



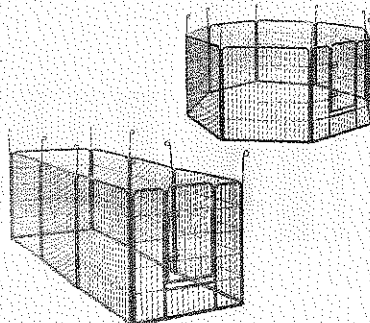
Place two units next to each other's frames. Hold the drill holes of the hinge level. Insert one of the anchoring hooks through the holes.

②



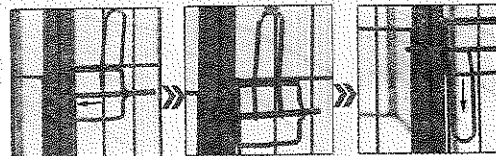
Combine the other units in the same manner.

③



In the end, insert the door unit.

④



Lock the swing door by gripping the handle of the bar and pushing it into the latch.

Security Instructions

Intended use

- This equipment is for guarding puppies. It is designed to be used this way and may only be used in this manner.
- Do not use this equipment as a playpen for children.
- Little children may not be requested to install the puppy kennel. They must not operate the bolt by themselves. There is a risk of entrapping fingers or the hand.
- The puppy kennel is not suitable as a kennel for big dogs.